

FEP ME 975



- Real time image processing at 24-bit
- Resolution and penetration at highest levels
- Visualization of black & white and color images on switchable single monitor, or on double monitor system.
- Implementation of key image enhancements features "on the fly"
- Innovative new digital archiving system
- Ability to store working sessions

Newly developed inspection system.
Ideal for security screening of hold baggage and large packages.

Features the most up-to-date detection technology, acquisition electronics, and PC data management software.

Preset for implementation of automatic software for identification of illegal or dangerous materials.

Ergonomically designed control console allows for faster screening.

TECHNICAL SPECIFICATIONS

Inspection unit

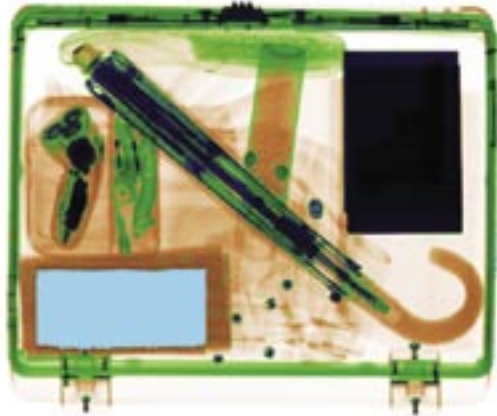
- Dimensions:
3000mm (L) x 1200mm (W) x 1945mm (H)
- Weight: 940kg
- Inspection tunnel size:
900mm (W) x 750mm (H)
- Conveyor belt height: 350mm (adjustable)
- Belt speed: 0.2m/second
- Maximum bag weight: 240kg
- Power supply:
Monophase 230 VAC or 110 VAC +/- 10%
- Frequency: 50/60Hz +/- 3Hz
- Power absorption: < 1.5kVA
- Duty cycle: 100%

Console / Control Unit

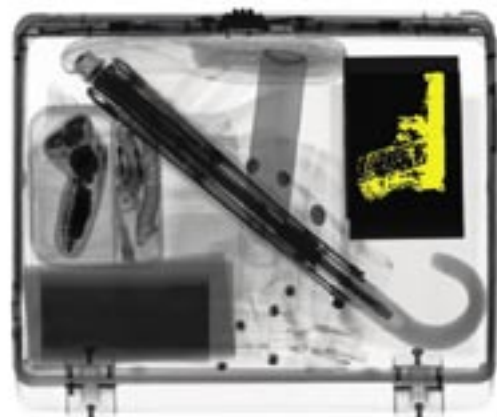
- Table size:
900mm (L) x 800mm (W) x 750mm (H)
- Weight: 30kg
- Controls:
 - Start key
 - Belt start button
 - Processing buttons
 - Zoom buttons
 - Alarm button
 - Emergency Stop



Color image where materials are represented as: orange for organic, blue for inorganic, green for amorphous objects.



Automatic signaling of high-absorption organic masses (adjustable threshold)



Example of automatic signaling of metallic high-absorption object (adjustable threshold)

- Monitor:
17" SVGA, 1024 x 768 (standard)

X-Ray generator

- High frequency monoblock (30kHz)
- High voltage: 150kV

Detection characteristics

- Resolution:
36 AWG guaranteed
38 AWG typical
- Penetration:
23mm steel guaranteed
25mm steel typical
- Photodiodes:
Double L shaped array, 1152 photodiodes

Standard image enhancement features

- Material type display
- Contrast optimization
- Edge enhancement
- Image reversal
- Removal of low-color levels
- Energy stripping
- Histogram equalization
- Pseudo colors

- Zoom x2 up to x64
- All features available "on the fly"

Advanced functions

- Density alarms (adjustable threshold)
- Organic alarms (adjustable threshold)
- ADS: Automatic Detection System (optional)
- TIP (optional)
- Digital archiving of images
- XIR: External Image Recorder (optional)

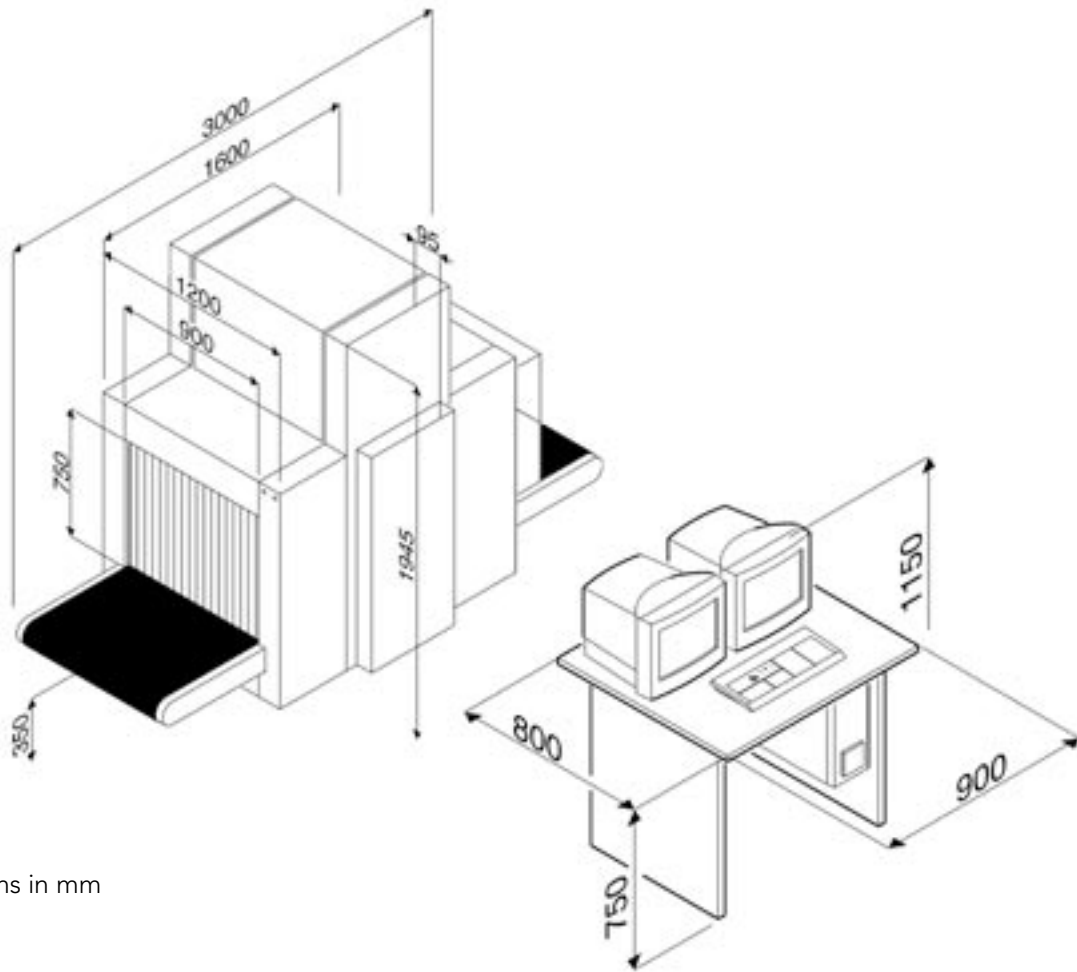
Regulation information

- The system is in compliance with all applicable international regulations for X-Ray equipment.
- Average baggage dose:
< 1.4 μ Sv / inspection (0.14mR)
- Leakage dose at 10cm:
< 1.0 μ Sv / hour (0.1mR/h)
- Film safety: guaranteed up to ISO 1600/33 DIN

Environmental compliance

- Operational temperatures: 0°C – 40°C
- Storage temperature: -20°C – +60°C
- Humidity: 90% (non condensing)
- Protection class: IP22
- Noise level: < 60dB (A)





Dimensions in mm

Reserving the right to improve and modify

RESEARCH LABORATORIES acknowledged "Highly Qualified" with decree D.M. 9-10-1985 – L.46/82 art.4

Head office and facilities:

Via **Arturo Gilardoni**, 1 - 23826 Mandello del Lario (LC) - Italy

tel. (+39) 0341-705.111 - fax (+39) 0341-735.046

e-mail: gx@gilardoni.it - www.gilardoni.it

Export department:

tel. (+39) 0341-705.224 - 0341-705.281

REFERENCE REGULATIONS:

IEC, TSA

